

Kwik*POP for Sierra Charts.

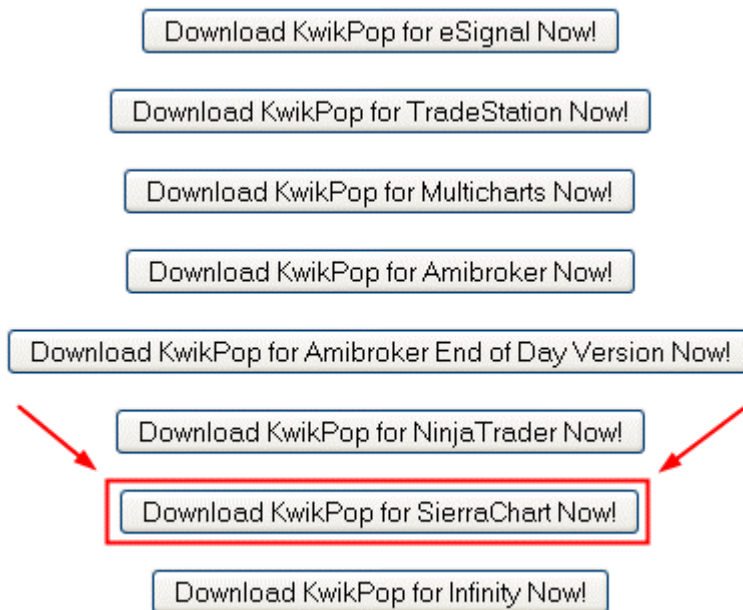
The **Kwik*POP** indicators are contained in a .dll that 'plugs-in' to the Sierra Charts platform, versions 8.3 and greater. Installation is quite easy. Simply run the installer from our web site. The whole process takes less than ten minutes and you are up and running. We provide special **Chart files** in our download so that you get the same charts you see running in our HotComm chat room every day.

DOWNLOADING Kwik*POP for Sierra Charts

*** **SPECIAL NOTICE FOR CUSTOMERS USING WINDOWS VISTA. See page 3.**

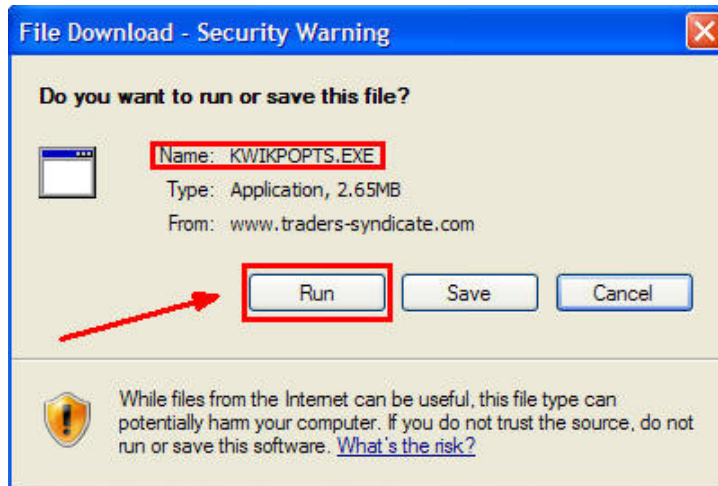
If you already have Sierra Charts installed on your computer you can download a free trial of Kwik*POP by following these steps.

- 1) Turn off Sierra Charts. and then paste this link into your browsers URL window
http://www.traders-syndicate.com/s_public/return2.php4
- 2) Click on the bar that says **DOWNLOAD KWIKPOP FOR SIERRACHART NOW**

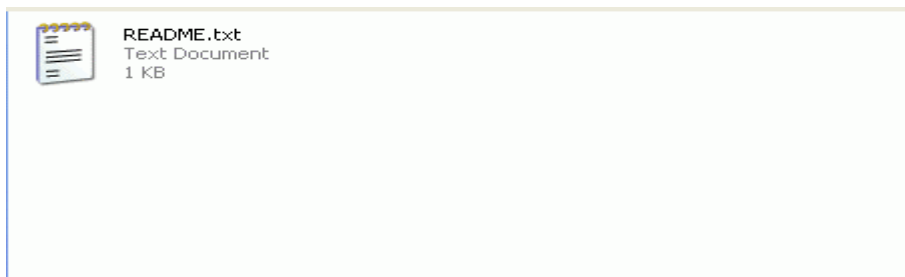


- 3) RUN the installer. An End User License Agreement (EULA) pops up first. Be certain you read the Disclosure/Disclaimer panel before accepting the installation. After you click ACCEPT, then RUN the installer.

When finished the installer will say Kwikpop SUCCESSFULLY INSTALLED.



- 4) When the installer is finished a **READ ME** file will open up. Please print that out and save it
- 5) The installer creates a file in c:\Program Files\KWIKPOP for SIERRACHART. Go to START\MY COMPUTER\Local Disc C:\Program Files\KWIKPOP for SIERRACHART and open that folder.

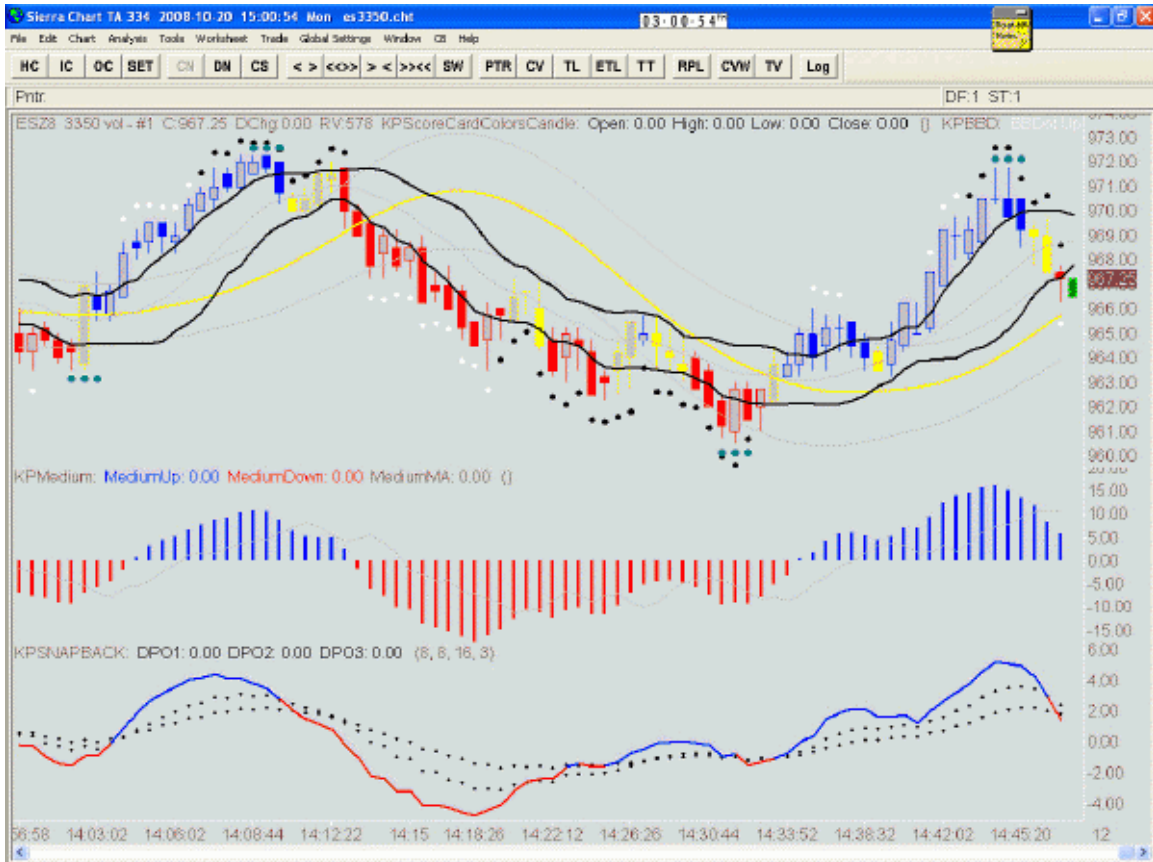


- 6) Remember the location of the Readme file for future reference

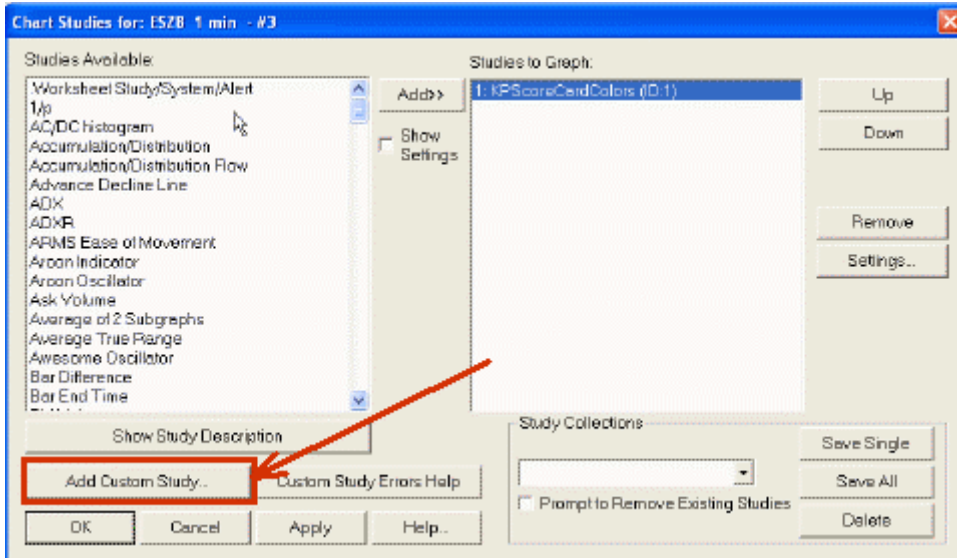
NOTE FOR INFINITY CHART USERS

For those of you who are using the Infinity Charts, there is 1 additional step that you must follow. The 2 Chartbooks, es3350 and KP7500 must be copied into the YesTrader folder. Go to My Computer > Local Disk (C): > SierraChart > data. While holding the Ctrl key down, left click on es3350.cht and KP7500.cht icons which will highlight them. Right click on one of them and select copy.

Now go to My Computer again > Local Disk (C) > Program Files > YesTrader > Sierra Chart > Data. Place your mouse pointer in the data window, left click, right click and select Paste. This will copy the 2 templates into the Infinity version of Sierra Charts.



If you want to add or remove a kwikpop indicator, just right click on the chart and a window will appear. Click on Studies and the Chart Studies window shows all the available indicators.



Click on the Add Custom Study button to access the Kwikpop indicators. Now click on the +sign in front of Kwikpop studies DLL, select the kwikpop indicator that you want to install on your chart and click add. At this point you can modify some of the indicator parameters.

